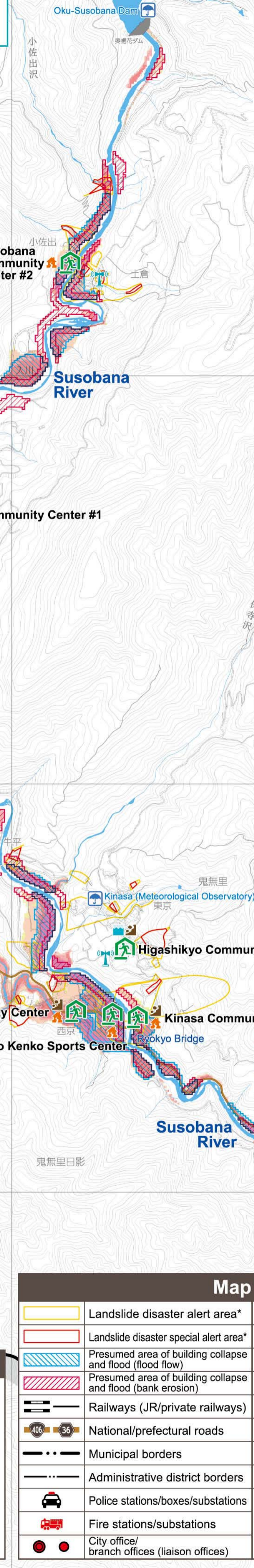
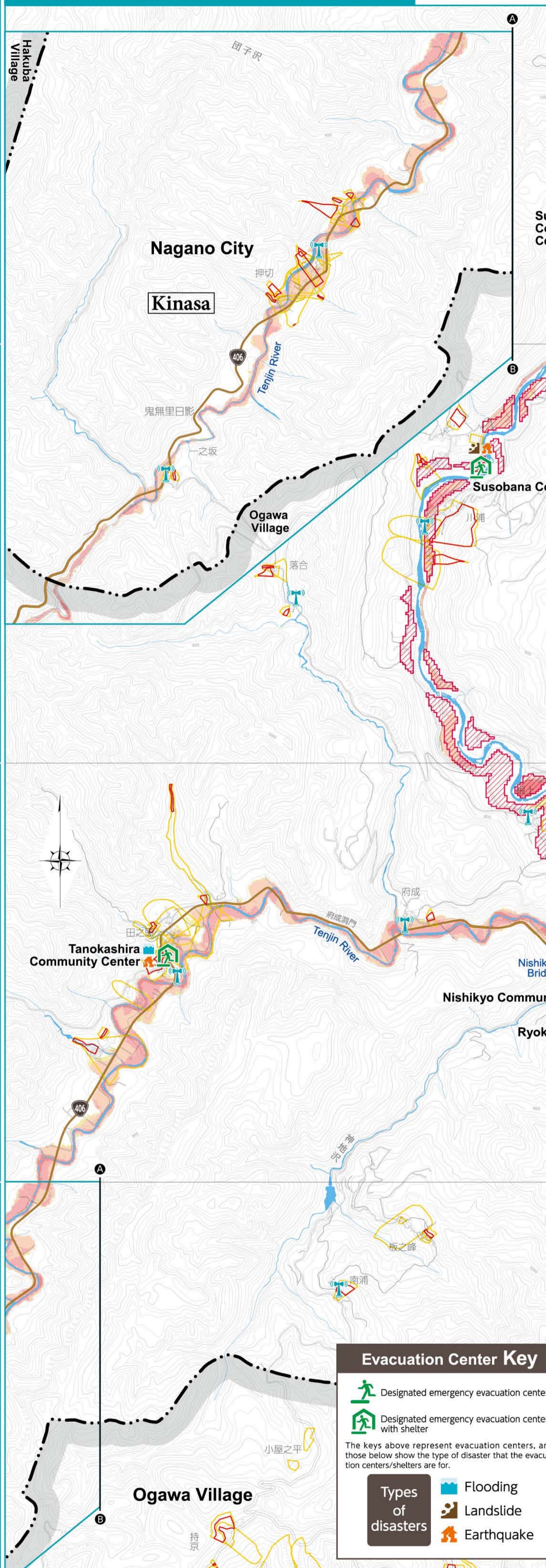
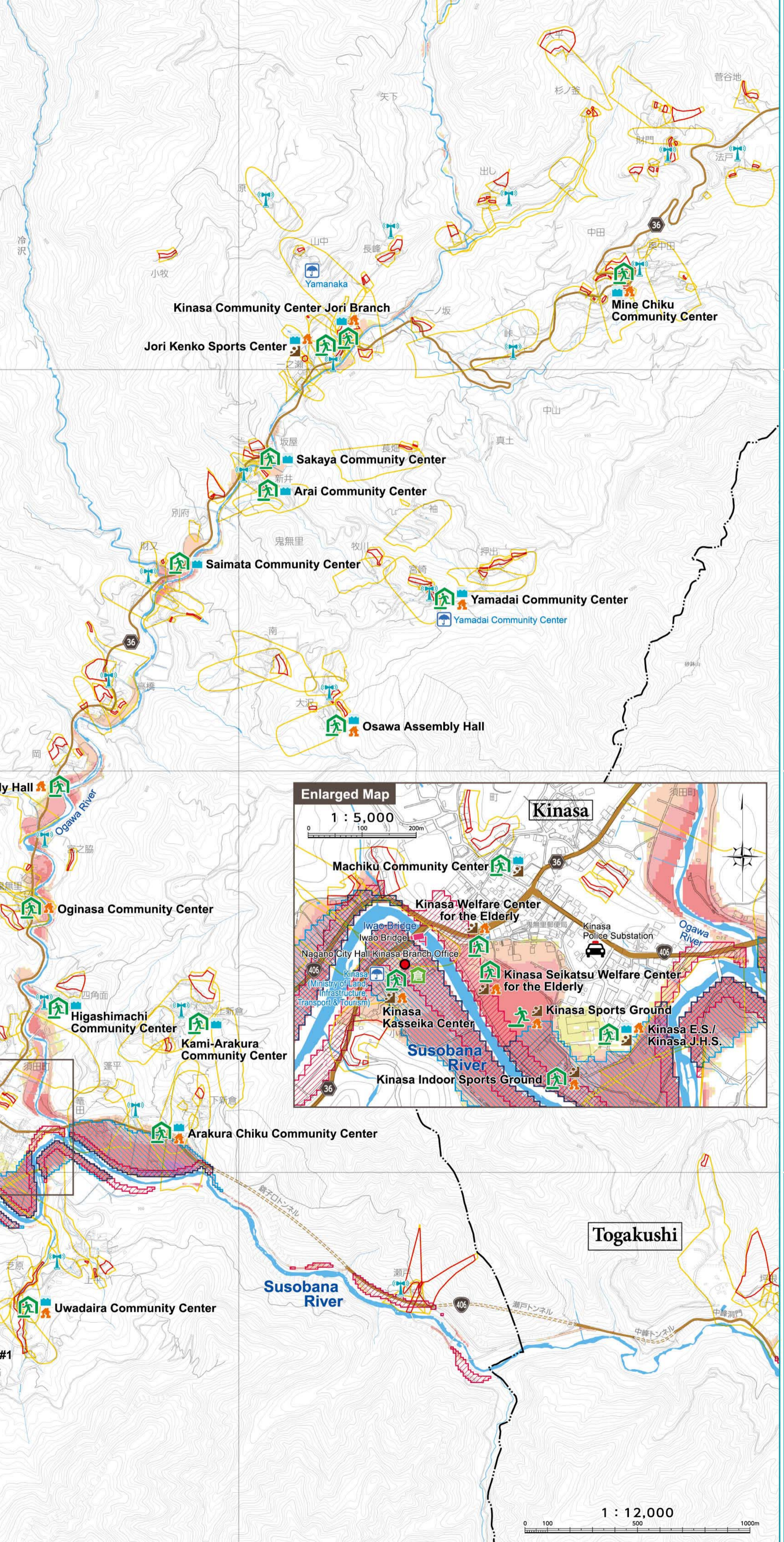
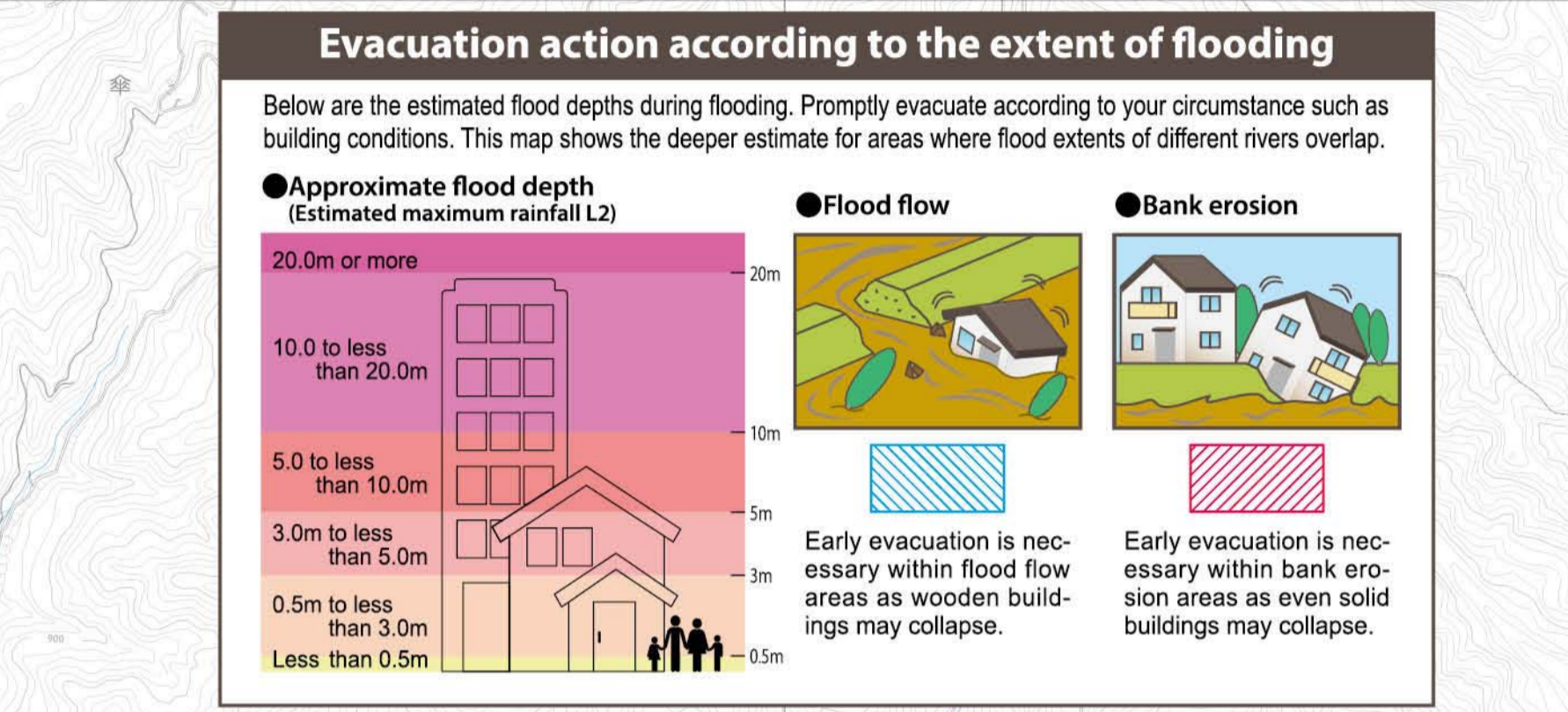


Nagano City Flood Hazard Map Kinasa



List of Evacuation Centers

Designated emergency evacuation centers (*: doubles as designated evacuation shelter)	Disasters that may require evacuation			Map coordinates	Designated emergency evacuation centers (*: doubles as designated evacuation shelter)	Disasters that may require evacuation			Map coordinates
	Flooding	Landslide	Earthquake			Flooding	Landslide	Earthquake	
Yamadai Community Center ★	○	×	○	D2	Matsubara Community Center ★	○	○	×	C3
Osawa Assembly Hall ★	○	×	○	D2	Higashikyo Community Center ★	○	○	×	B3
Mine Chiku Community Center ★	○	×	○	D1	Kinasa Community Center Ryokyo Branch ★	×	○	○	B3
Kinasa Community Center Jori Branch ★	○	×	○	D1	Kinasa Sports Ground	×	○	○	Enlarged Map
Jori Kenko Sports Center ★	○	○	○	D1	Kinasa Indoor Sports Ground ★	×	○	○	Enlarged Map
Sakaya Community Center ★	○	×	×	D2	Uwadaira Community Center ★	○	×	○	C4
Arai Community Center ★	○	×	×	D2	Kinasa Kasseika Center ★	×	○	○	Enlarged Map
Saimata Community Center ★	○	×	×	C2	Naka-Ku Community Center #1 ★	○	×	○	C4
Misato Assembly Hall ★	×	×	○	C3	Naka-Ku Community Center #2 ★	○	×	×	C4
Oginasa Community Center ★	×	×	○	C3	Naka-Ku Kasseika Center ★	○	×	○	C4
Arakura Chiku Community Center ★	○	×	○	C3	Soyama Assembly Place ★	○	×	○	C4
Kami-Arakura Community Center ★	○	×	×	C3	Kyoei Community Center ★	○	○	×	B3
Machiku Community Center ★	○	○	×	Enlarged Map	Susobana Community Center #1 ★	×	○	○	A2
Higashimachi Community Center	○	×	×	C3	Susobana Community Center #2 ★	×	×	○	B1
Kinasa Welfare Center for the Elderly ★	×	○	○	Enlarged Map	Nishikyo Community Center ★	×	○	○	B3
Kinasa Seikatsu Welfare Center for the Elderly ★	×	○	○	Enlarged Map	Ryokyo Kenko Sports Center ★	×	×	○	B3
Kinasa E.S./Kinasa J.H.S. ★	○	○	○	Enlarged Map	Tanokashira Community Center ★	○	×	○	A3



Map Key

	Landslide disaster alert area*		Hospitals
	Landslide disaster special alert area*		Emergency first-aid stations
	Presumed area of building collapse and flood (flood flow)		Water-level gauges/water-level observation points/rainfall observation points
	Presumed area of building collapse and flood (bank erosion)		Live cameras
	Railways (JR/private railways)		Warehouses for emergency supplies/food prevention supplies
	National/prefectural roads		Disaster administrative radios
	Municipal borders		Underpasses
	Administrative district borders		Main drainage pump stations
	Police stations/boxes/substations		Estimated flood extents during once-in-a-century level extreme rainfall (Data from the Chikuma and Saigawa river basins combined)
	Fire stations/substations		Rainfall assumed: Total of 186mm for two consecutive days throughout the basin
	City office/branch offices (liaison offices)		

Evacuation Center Key

	Designated emergency evacuation centers		Flooding
	Designated emergency evacuation centers with shelter		Landslide
	Designated emergency evacuation centers with shelter		Earthquake

The keys above represent evacuation centers, and those below show the type of disaster that the evacuation centers/shelters are for.

