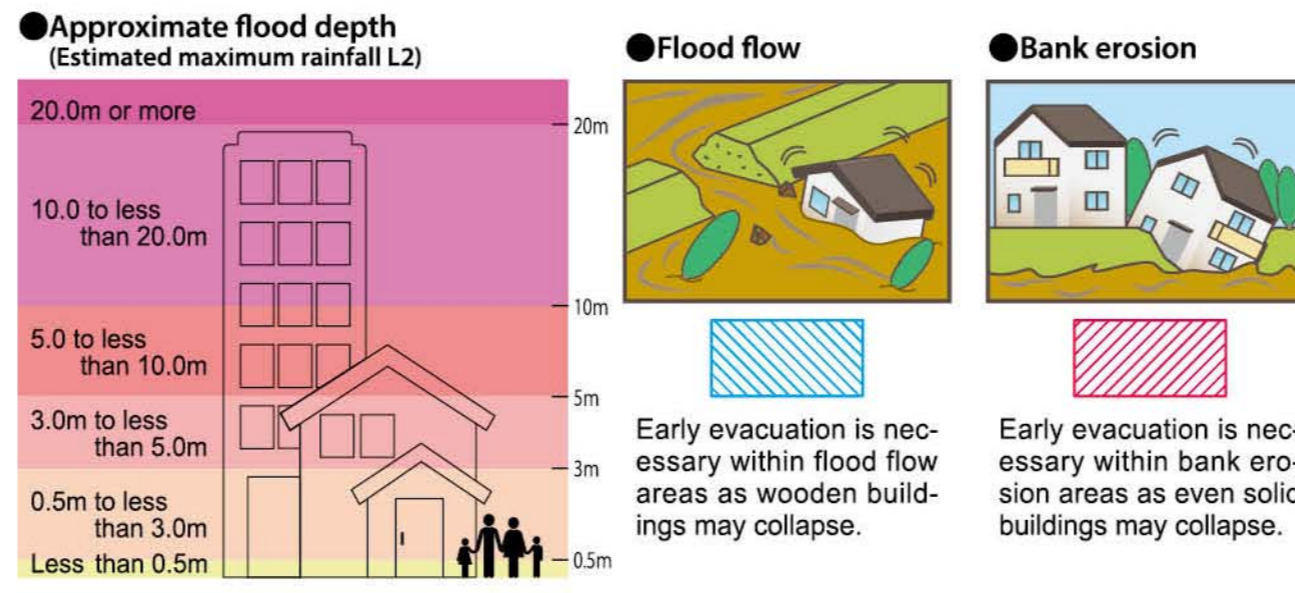


Nagano City Flood Hazard Map

Naniai

Evacuation action according to the extent of flooding

Below are the estimated flood depths during flooding. Promptly evacuate according to your circumstance such as building conditions. This map shows the deeper estimate for areas where different rivers overlap.



Map Key

- Landslide disaster alert area*
- Landslide disaster special alert area*
- Presumed area of building collapse and flood (flood flow)
- Presumed area of building collapse and flood (bank erosion)
- Railways (JR/private railways)
- National/prefectural roads
- Municipal borders
- Administrative district borders
- Police stations/boxes/substations
- Fire stations/substations
- City office/branch offices (liaison offices)
- Hospitals
- Emergency first-aid stations
- Water-level gauges/water-level observation points/rainfall observation points
- Live cameras
- Warehouses for emergency supplies/flood prevention supplies
- Disaster administrative radios
- Underpasses
- Main drainage pump stations

Estimated flood extents during once-in-a-century level extreme rainfall (Data from the Chikuma and Saigawa river basins combined)
Rainfall assumed: Total of 180mm for two consecutive days throughout the basin

Evacuation Center Key

- Designated emergency evacuation centers
- Designated emergency evacuation centers with shelter

The keys above represent evacuation centers, and those below show the type of disaster that the evacuation centers/shelters are for.

Types of disasters	Symbol
Flooding	[Blue house icon]
Landslide	[Green house icon]
Earthquake	[Red house icon]

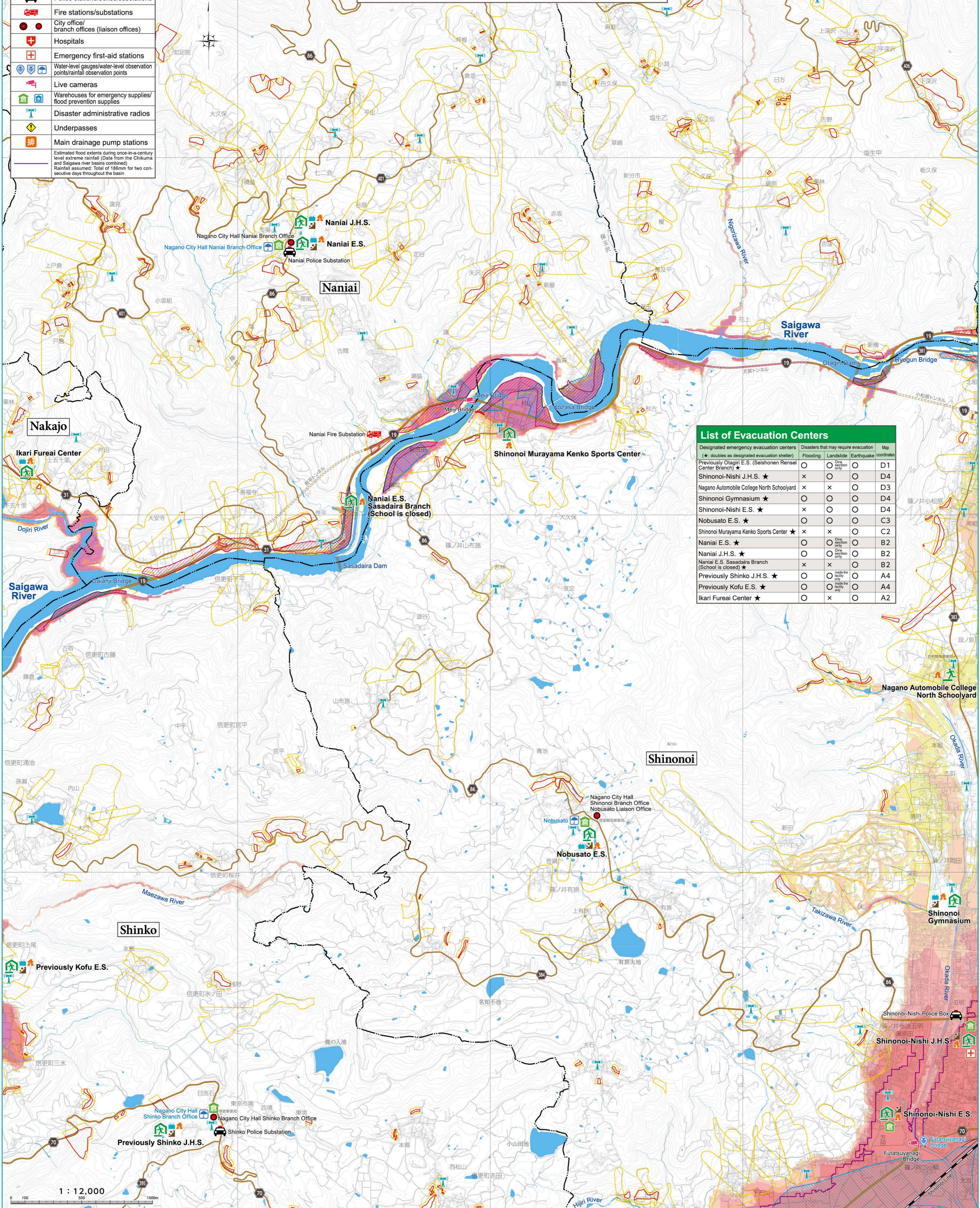
Togakushi

Jinbadaira

Otagiri

Nagano City Hall Otagiri Branch Office

Previously Otagiri E.S. (Seishonen Rensei Center Branch)



List of Evacuation Centers

Designated emergency evacuation centers (*: doubles as designated evacuation shelter)	Disasters that may require evacuation			Map coordinates
	Flooding	Landslide	Earthquake	
Previously Otagiri E.S. (Seishonen Rensei Center Branch)	○	○ (One section only)	○	D1
Shinonoi-Nishi J.H.S. ★	×	○	○	D4
Nagano Automobile College North Schoolyard	×	×	○	D3
Shinonoi Gymnasium ★	○	○	○	D4
Shinonoi-Nishi E.S. ★	×	○	○	D4
Nobusato E.S. ★	○	○	○	C3
Shinonoi Murayama Kenko Sports Center ★	×	×	○	C2
Naniai E.S. ★	○	○ (One section only)	○	B2
Naniai J.H.S. ★	○	○ (One section only)	○	B2
Naniai E.S. Sasadaira Branch (School is closed) ★	×	×	○	B2
Previously Shinko J.H.S. ★	○	○ (inside the facility only)	○	A4
Previously Kofu E.S. ★	○	○ (inside the facility only)	○	A4
Ikari Fureai Center ★	○	×	○	A2